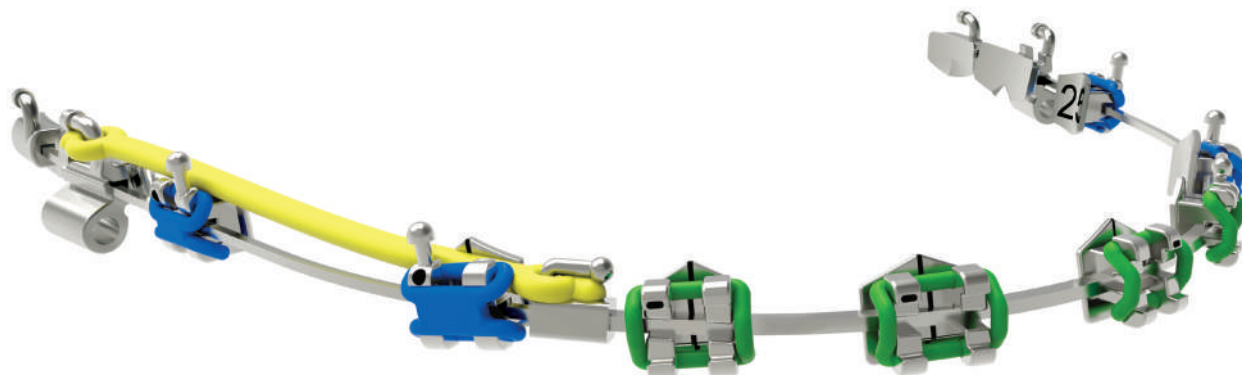


WIRE AND WIRE FORM



C





In our Centre for Biotechnological Research "Marco Pozzi", the Shimadzu micro hardness tester and the Instron testing machine are used for the verification of the mechanical properties of the wires.

Leone orthodontic wires are available in a range of alloys and different grades of elasticity and hardness to meet any therapeutic requirements. The mechanical properties of the wires are constantly checked to ensure consistent quality.

All Leone wires are supplied in a practical packaging either in rolls or in straight wire sections.

The range includes laboratory wires made of stainless steel, chromium cobalt alloy, which can be heat-treated, and **BIOSTEEL**® nickel-free content.

The numerous forms of archwires available are manufactured from various alloys:

- stainless steel with different mechanical properties to meet all orthodontic requirements;
- nickel titanium alloy, available as **MEMORIA**®, **THERMOMEMORIA**® and **MEMORIA NATURA**®, releasing gentle but constant forces, it can be formed into a large variety of shapes;
- nickel-free titanium molybdenum alloy, available as Beta **MEMORIA**®, featuring exceptional pliability and elasticity as well as low friction.

The Leone packages for wires feature a special accurate design. Clasp and Crozat wires are packaged in anti-rolling coiled spools while straight wires are packaged in triangular shaped tubes to prevent rolling out from the table. All Leone archwires are packaged in little envelopes that clearly show the part number, the dimensions, the product features and the lot number.

LEOWIRE® ROUND SPRING HARD WIRE

Chromium stainless steel alloy.
Diamond drawn to obtain highly resistant and stainless levelled surfaces. Suitable for all orthodontic applications.

BIOSTEEL® ROUND SPRING HARD WIRE NICKEL-FREE*

Stainless steel alloy purposely made to prevent any nickel allergic reactions (Cr 16,5%, Mn 11%, Mo 2,7%, N 0,5%, balance Fe).
Suitable for all orthodontic applications.

**Nickel trace elements of ≤ 0,05% are due to the process of manufacturing*



STANDARD SPOOL

∅		LEOWIRE® spring hard	BIOSTEEL® spring hard	
mm	inch	1800/2000 N/mm ²	1800/2000 N/mm ²	m
0,5	.020	C0400-05		50
0,6	.024	C0400-06	C0401-06	40
0,7	.028	C0400-07	C0401-07	25
0,8	.032	C0400-08	C0401-08	20
0,9	.036	C0400-09	C0401-09	10
1,0	.040	C0400-10	C0401-10	10
1,1	.044	C0400-11		10
1,2	.048	C0400-12		10
1,3	.052	C0400-13		10
1,4	.055	C0400-14		8

LABORATORY ROLL

LEOWIRE® spring hard		BIOSTEEL® spring hard		
1800/2000 N/mm ²		1800/2000 N/mm ²	m	g
C0450-05			306	
C0450-06	C0451-06		225	
C0450-07	C0451-07		165	
C0450-08	C0451-08		125	
C0450-09	C0451-09		100	500
C0450-10	C0451-10		80	
C0450-11			70	
C0450-12			53	
C0450-13			45	
C0450-14			39	





CHROMIUM-COBALT WIRE

Heat-treatable chromium cobalt alloy, stainless and tough. Its tensile strength allows clasps, even difficult ones to be easily shaped, without breakage. It is self tempering during soldering or heating at 450° C. Necessary for any Crozat wire technique.



∅		hard heat-treatable		pkg.
mm	inch	1350/1500 N/mm ²	m	g
0,6	.024	CO410-06	30	70
0,7	.028	CO410-07	22	
0,8	.032	CO410-08	17	
0,9	.036	CO410-09	13	
1,0	.040	CO410-10	11	
1,1	.044	CO410-11	9	
1,2	.048	CO410-12	8	
1,3	.052	CO410-13	6	



STRAIGHT ROUND WIRE

An alloy properly designed for forming arches and springs in fixed orthodontic appliances. It is diamond drawn to obtain resistant surfaces.

Available in three tempers: hard, spring hard and extra spring hard to be adapted to any therapeutic application.

∅	hard	spring hard	extra spring hard	pkg.
inch	1400/1600 N/mm ²	1800/2000 N/mm ²	2200/2400 N/mm ²	
.014	C8080-14	C8180-14	C8380-14	20 wires
.016	C8080-16	C8180-16	C8380-16	
.018	C8080-18	C8180-18	C8380-18	
.020	C8080-20	C8180-20	C8380-20	
.032	C8080-32			
.036	C8080-36			
.040	C8080-40			
.045	C8080-45			
.051	C8080-51			



STRAIGHT RECTANGULAR WIRE

An alloy properly designed for orthodontic applications.

Diamond drawn to obtain perfectly square angles and levelled surfaces.

Available in two tempers: spring hard and extra spring hard, it is tested and quality controlled in the laboratory.

∅	spring hard	extra spring hard	pkg.
inch	1800/2000 N/mm ²	2200/2400 N/mm ²	
.016x.016	C8016-16	C8116-16	10 wires
.016x.022	C8022-16	C8122-16	
.017x.017	C8017-17	C8117-17	
.017x.022	C8022-17	C8122-17	
.017x.025	C8025-17	C8125-17	
.018x.022	C8022-18		
.018x.025	C8025-18	C8125-18	
.019x.025	C8025-19	C8125-19	
.020x.025	C8025-20		
.021x.025	C8025-21	C8125-21	
.0215x.028	C8028-21	C8128-21	





LEOLOY® SQUARE AND RECTANGULAR HEAT-TREATABLE WIRE

Chromium-cobalt base alloy, heat-treatable.
Highly stainless and resistant to breakage.
Available in two tempers.

Pack of 10 wires

soft heat-treatable		spring heat-treatable
1400/1600 N/mm ²	inch	1700/1900 N/mm ²
C8216-16	.016x.016	C8416-16
C8222-16	.016x.022	C8422-16
C8225-17	.017x.025	C8425-17

BLUE LEOLOY® - SOFT HEAT-TREATABLE

It is initially the softest of the two tempers. It is intended for construction of archwires which require considerable bending. After heat-treating (480° C), it will become so hard as stainless steel wires. Recommended for Ricketts technique.

YELLOW LEOLOY® - SPRING HEAT-TREATABLE

With slight springer qualities than blue. It is intended for construction of archwires which require considerable bending. It can be used as furnished or can be heat treated (480° C) if greater springback is required.



"AUSTRALIAN" WIRE SPOOLS

It is diamond drawn for perfect levelling of surfaces.
The two tempers are laboratory tested and quality controlled.

Package: 8m spools

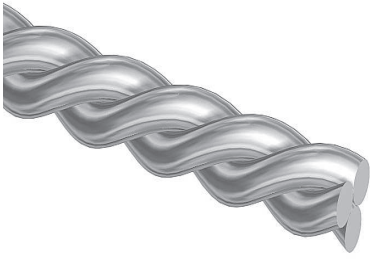
∅	extra spring hard	super hard heat-treated
inch	2200/2400 N/mm ²	2500/2700 N/mm ²
.012	C0420-12	
.014	C0420-14	C0430-14
.016	C0420-16	C0430-16
.018	C0420-18	C0430-18
.020	C0420-20	C0430-20




"AUSTRALIAN" ARCHWIRES SPECIAL PLUS

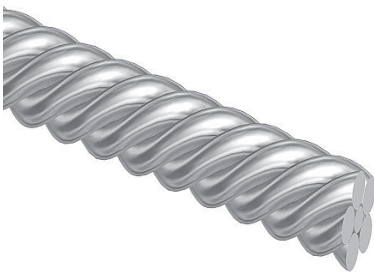
Pack of 10

medium upper	∅	medium lower
	inch	
C2010-16	.016	C2050-16
C2010-20	.020	C2050-20




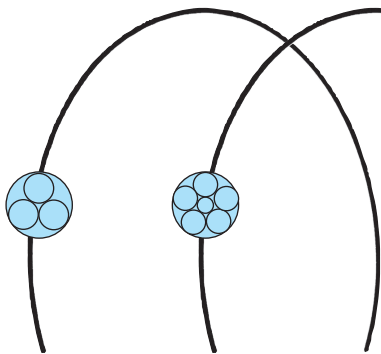
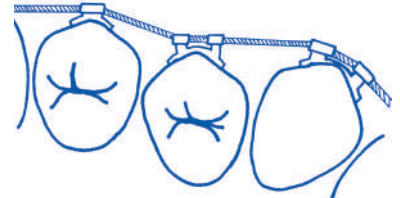
STRAIGHT TWIST WIRE

∅		
inch		pkg.
.015	C8580-15	10 wires
.0175	C8580-17	
.0195	C8580-19	
.0215	C8580-21	





STRAIGHT FLEX WIRE

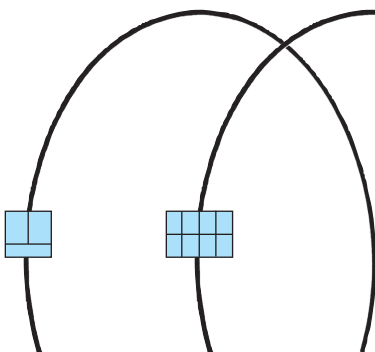
∅		
inch		pkg.
.015	C8880-15	10 wires
.0175	C8880-17	
.0195	C8880-19	





ROUND PREFORMED TWIST AND FLEX ARCHWIRES



twist		
∅		
inch		pkg.
.0155	C5540-15	10
.0175	C5540-17	

flex		
∅		
inch		pkg.
.0155	C5440-15	10
.0175	C5440-17	



RECTANGULAR PREFORMED TWIST ARCHWIRES

twist 3 wires		
		
inch		pkg.
.016x.016	C5541-16	10
.016x.022	C5542-16	

twist 8 wires		
		
inch		pkg.
.017x.025	C5745-17	10
.018x.025	C5745-18	



ROUND AND RECTANGULAR STANDARD ARCHWIRES

Standard preformed. Made out of extra spring hard wire for higher resiliency. Marked at the midline, black for upper and red for lower.

Pack of 10



upper	∅	lower
inch		
C5110-12	.012	C5150-12
C5110-14	.014	C5150-14
C5110-16	.016	C5150-16
C5110-18	.018	C5150-18
C5110-20	.020	C5150-20

upper	∕	lower
inch		
C5111-16	.016x.016	C5151-16
C5112-16	.016x.022	C5152-16
C5115-17	.017x.025	C5155-17
C5115-18	.018x.025	C5155-18
C5115-19	.019x.025	C5155-19
C5115-21	.021x.025	C5155-21



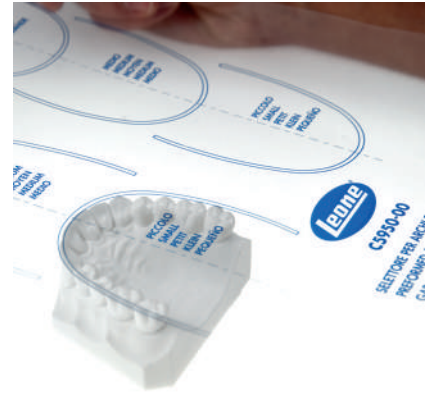
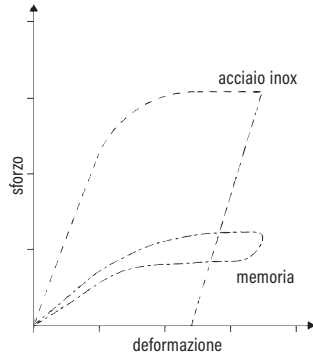
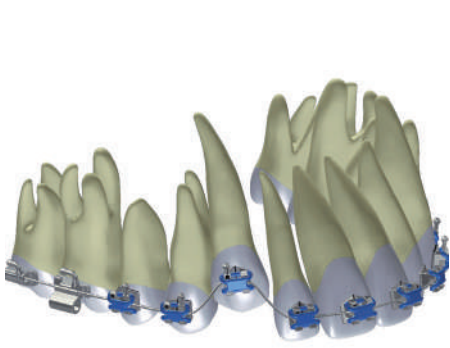
ROUND AND RECTANGULAR PREFORMED ARCHWIRES

Extra spring hard wire, round or rectangular, diamond drawn for leveling of surfaces. Available in small, medium and large shape, both upper and lower, they represent the ideal answer to achieve your treatment goals.

Archwire selector C5950-00 is available to choose the right shape for your treatment.



∅	small		medium		large		pkg.
	upper	lower	upper	lower	upper	lower	
.014			C3110-14	C3150-14			10
.016	C3010-16	C3050-16	C3110-16	C3150-16	C3210-16	C3250-16	
.018	C3010-18	C3050-18	C3110-18	C3150-18	C3210-18	C3250-18	
.020			C3110-20	C3150-20			
∕							10
.016x.016			C3111-16	C3151-16			
.016x.022	C3012-16	C3052-16	C3112-16	C3152-16	C3212-16	C3252-16	
.017x.025			C3112-17	C3152-17			
.018x.025	C3012-18	C3052-18	C3112-18	C3152-18	C3212-18	C3252-18	
.019x.025	C3012-19	C3052-19	C3112-19	C3152-19	C3212-19	C3252-19	
.021x.025			C3112-21	C3152-21			



MEMORIA® PREFORMED ARCHWIRES

In a superelastic nickel-titanium base alloy, these archwires provide gentle and continuous forces, reduce treatment time and improve patient comfort. The highly polished surface eliminates any bracket slot friction. Their non-deformability and superelasticity, which are expressed in the continuous force delivery over a wide deflection range, have been tested on thousands of treatments. Available in small, medium and large shape, both upper and lower, they represent the ideal answer to achieve your treatment goals.

**C5950-00
PREFORMED
ARCHWIRE SELECTOR**

Lay the selector on the model and select the right arch shape.



∅	small		medium		large		conf.
	upper	lower	upper	lower	upper	lower	
.012			C5910-12	C5950-12			10
.014	C5913-14	C5953-14	C5910-14	C5950-14	C5916-14	C5956-14	
.016	C5913-16	C5953-16	C5910-16	C5950-16	C5916-16	C5956-16	
.018	C5913-18	C5953-18	C5910-18	C5950-18	C5916-18	C5956-18	
.020			C5910-20	C5950-20			
▧							
.016x.016			C5911-16	C5951-16			10
.016x.022	C5914-16	C5954-16	C5912-16	C5952-16	C5917-16	C5957-16	
.017x.025	C5914-17	C5954-17	C5912-17	C5955-17	C5917-17	C5957-17	
.018x.018			C5911-18	C5951-18			
.018x.025	C5914-18	C5954-18	C5915-18	C5955-18	C5917-18	C5957-18	
.019x.025	C5914-19	C5954-19	C5915-19	C5955-19	C5917-19	C5957-19	
.021x.025			C5915-21	C5955-21			

∅	medium		pkg.
	upper	lower	
.012	C5910-012	C5950-012	25
.014	C5910-014	C5950-014	
.016	C5910-016	C5950-016	
.018	C5910-018	C5950-018	
.020	C5910-020	C5950-020	
▧			
.016x.016	C5911-016	C5951-016	25
.016x.022	C5912-016	C5952-016	
.017x.025	C5912-017	C5955-017	
.018x.018	C5911-018	C5951-018	
.018x.025	C5915-018	C5955-018	
.019x.025	C5915-019	C5955-019	
.021x.025	C5915-021	C5955-021	





MEMORIA® PREFORMED ARCHWIRES "V" BEND

A V bend on midline avoids any unwanted displacement of the archwire by ensuring the therapeutical treatment previously foreseen with the selected archwire shape.



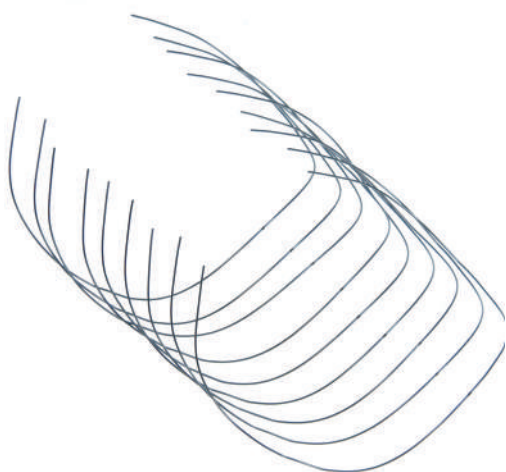
medium upper	∅	medium lower	
	inch		pkg.
C5910V12	.012	C5950V12	10
C5910V14	.014	C5950V14	
C5910V16	.016	C5950V16	
C5910V18	.018	C5950V18	

medium upper	∕	medium lower	
	inch		pkg.
C5911V16	.016x.016	C5951V16	10
C5912V16	.016x.022	C5952V16	
C5912V17	.017x.025	C5955V17	
C5915V18	.018x.025	C5955V18	

MEMORIA® ARCHWIRES REVERSE CURVE OF SPEE

Superelastic nickel titanium archwires for levelling movements and closure of spaces. They are also indicated for the correction of bite closure alterations.

Pack of 10



upper	∅	lower
	inch	
C6910-16	.016	C6950-16
C6910-18	.018	C6950-18

upper	∕	lower
	inch	
C6912-16	.016x.022	C6952-16
C6912-17	.017x.025	C6952-17
C6912-19	.019x.025	C6952-19

**MEMORIA®
ANATOMICAL ARCHWIRES**

Superelastic nickel titanium base alloy archwires which deliver biological forces over a wide deflection range. **MEMORIA®** archwires are available in five arch forms developed after extensive research and represent the ideal answer to individual treatment problems. Using the special arch selector, the best suited arch shape can be easily found.



∅	A	B	C	D	E	pkg.
inch						
.014	C6040-14	C6140-14	C6240-14	C6340-14	C6440-14	
.016	C6040-16	C6140-16	C6240-16	C6340-16	C6440-16	10
.018	C6040-18	C6140-18	C6240-18	C6340-18	C6440-18	
∅						
.016x.016	C6041-16	C6141-16	C6241-16	C6341-16	C6441-16	
.016x.022	C6042-16	C6142-16	C6242-16	C6342-16	C6442-16	10
.017x.025	C6042-17	C6142-17	C6242-17	C6342-17	C6442-17	
.019x.025	C6045-19	C6145-19	C6245-19	C6345-19	C6445-19	



**C6250-00
MEMORIA® ANATOMICAL
ARCHWIRE SELECTOR**

Lay the selector on the model and select the right arch shape.



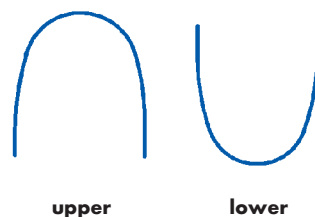
**THERMOMEMORIA®
ARCHWIRES**

An innovation in nickel titanium alloy archwires. According to room or body temperature, these archwires have a different behaviour. These archwires can be permanently bent with a plier at room temperature, but after insertion, at mouth temperature of about 37° C, they revert to their initial programmed shape, providing gentle and continuous forces to teeth. This particular feature makes their insertion into misaligned bracket slots easier and reduce patient's trauma while permitting the use of rectangular wires during early treatment and gaining good torque control of roots during tooth movements.

Pack of 10

upper	∅ inch	lower
C5930-16	.016	C5970-16
C5930-18	.018	C5970-18

upper	∕ inch	lower
C5931-16	.016x.016	C5971-16
C5932-16	.016x.022	C5972-16
C5935-18	.018x.025	C5975-18
C5935-19	.019x.025	C5975-19
C5935-21	.021x.025	C5975-21



**C6100-13
ARCHWIRE KIT STEP SYSTEM 2.0**



Pack content: 13 archwires, 7 upper and 6 lower, necessary for the execution of one-case treatment for **STEP 2.0** technique. Each archwire is single packaged. The packages are identified with a reference number and a tooth sketch which respectively indicate the standard application sequence and the arch wire function.

<p>.014 ARCO MEMORIA SUPERIORE MEMORIA UPPER ARCH</p> <p>SUP 1 ALLINEAMENTO E LIVELLAMENTO LEVELING AND ALIGNING</p>	<p>.016 ARCO MEMORIA SUPERIORE MEMORIA UPPER ARCH</p> <p>SUP 2 ALLINEAMENTO E LIVELLAMENTO LEVELING AND ALIGNING</p>	<p>.016 ARCO AUSTRALIANO SUPERIORE AUSTRALIAN UPPER ARCH</p> <p>SUP 3 CONTROLLO ANGOLOZIONE TIP CONTROL</p>
<p>.020 ARCO AUSTRALIANO SUPERIORE AUSTRALIAN UPPER ARCH</p> <p>SUP 4 CONTROLLO ANGOLOZIONE TIP CONTROL</p>	<p>.021 x .027 ARCO BIDIMENSIONALE CIG BETA MEMORIA/ADICIAO BETA MEMORIA/S.S. BIDIMENSIONAL ARCH W/N</p> <p>.016" x .016"</p> <p>SUP 5 CHIUSURA DEGLI SPAZI SPACE CLOSURE</p>	<p>.021 x .027 ARCO BETA MEMORIA BETA MEMORIA ARCH</p> <p>SUP 6 FINITURA FINISHING</p>
<p>.014 ARCO MEMORIA INFERIORE MEMORIA LOWER ARCH</p> <p>INF 1 ALLINEAMENTO E LIVELLAMENTO LEVELING AND ALIGNING</p>	<p>.016 ARCO MEMORIA INFERIORE MEMORIA LOWER ARCH</p> <p>INF 2 ALLINEAMENTO E LIVELLAMENTO LEVELING AND ALIGNING</p>	<p>.016 ARCO AUSTRALIANO INFERIORE AUSTRALIAN LOWER ARCH</p> <p>INF 3 CONTROLLO ANGOLOZIONE TIP CONTROL</p>
<p>.020 ARCO AUSTRALIANO INFERIORE AUSTRALIAN LOWER ARCH</p> <p>INF 4 CONTROLLO ANGOLOZIONE TIP CONTROL</p>	<p>.021 x .025 ARCO MEMORIA NICKEL TITANIO MEDIO NICKEL TITANIUM MEMORIA ARCH - MEDIUM</p> <p>INF 5 CONTROLLO TORQUE TORQUE CONTROL</p>	<p>.021 x .027 ARCO BETA MEMORIA BETA MEMORIA ARCH</p> <p>INF 6 FINITURA FINISHING</p>



BETA MEMORIA® WIRES AND ARCHWIRES

In a titanium molybdenum alloy, they feature high elasticity and good bendability with pliers. Highly finished to minimize friction between wire and slot. Nickel free. They are suitable for patients with allergic reactions.

BETA MEMORIA® ARCHWIRES

	upper	∅ inch	lower	pkg.
medium	C7110-16	.016	C7150-16	10
	C7110-18	.018	C7150-18	

	upper	∅ inch	lower	pkg.
small	C7012-21	.021x.027	C7015-21	10
medium	C7112-16	.016x.022	C7115-16	
	C7112-17	.017x.025	C7115-17	
	C7112-19	.019x.025	C7115-19	
	C7112-21	.021x.027	C7115-21	

BETA MEMORIA® STRAIGHT ROUND WIRE

∅ inch		pkg.
.016	C7900-16	10 wires 35 cm long
.032	C7900-32	
.036	C7900-36	
∅		
.016x.022	C7922-16	
.017x.025	C7925-17	



LINGUAL ARCHWIRES FOR IDEA-L BRACKETS

Sections .012" and .014" are made of a special Nickel Titanium alloy allowing light adaptations necessary in case of treatment extension to first bicuspids, thus keeping high elasticity. Section .016" Beta **MEMORIA®** is ideal to optimize the alignment and levelling values obtained.

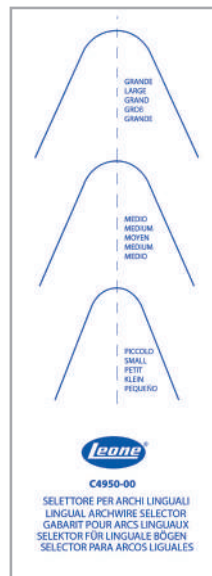
Pack of 2

MEMORIA® LINGUAL ARCHWIRES

∅ inch	small	medium	large
.012	C4950-12	C4951-12	C4952-12
.014	C4950-14	C4951-14	C4952-14

BETA MEMORIA® LINGUAL ARCHWIRES

.016	C4970-16	C4971-16	C4972-16
------	-----------------	-----------------	-----------------



C4950-00 LINGUAL ARCHWIRE SELECTOR

Lay the selector on the model and choose the correct arch shape.



**MEMORIA® NATURA®
PREFORMED ARCHWIRES**

They combine high elasticity and resistance to deformation of superelastic nickel titanium archwires with the best aesthetics. The tooth coloured coating is very stiff and resistant to oral liquid absorption, therefore a reduced friction is obtained when used with metal and cosmetic brackets.

Available round or rectangular.
Pack of 10



upper	∅ inch	lower
C5918-14	.014	C5958-14
C5918-16	.016	C5958-16
C5918-18	.018	C5958-18
C5918-20	.020	C5958-20

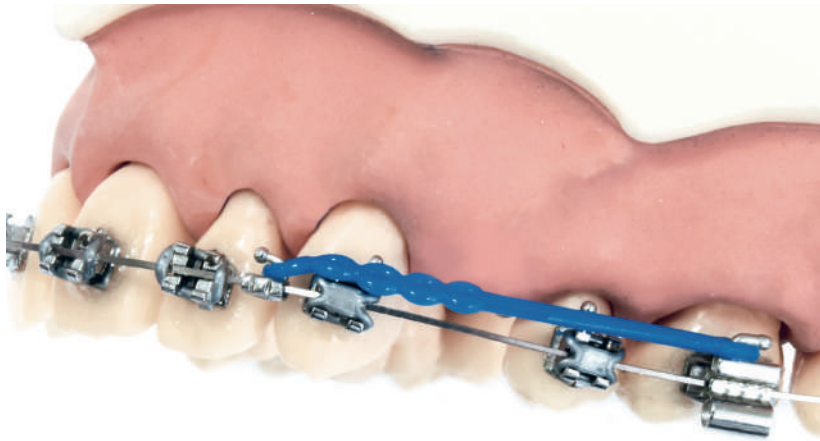
upper	∠ inch	lower
C5982-16	.016x.022	C5992-16
C5985-18	.018x.025	C5995-18
C5985-19	.019x.025	C5995-19
C5985-21	.021x.025	C5995-21



**C8922-16
MEMORIA® RECTANGULAR
STRAIGHT WIRE**

Nickel titanium base alloy wire which maintains high elasticity and allows sectionals and springs to be easily shaped. Available in .016"x.022".

Pack of 10 wires, 18 cm long



BI-DIMENSIONAL ARCHWIRES BETA MEMORIA®/STAINLESS STEEL WITH HOOK

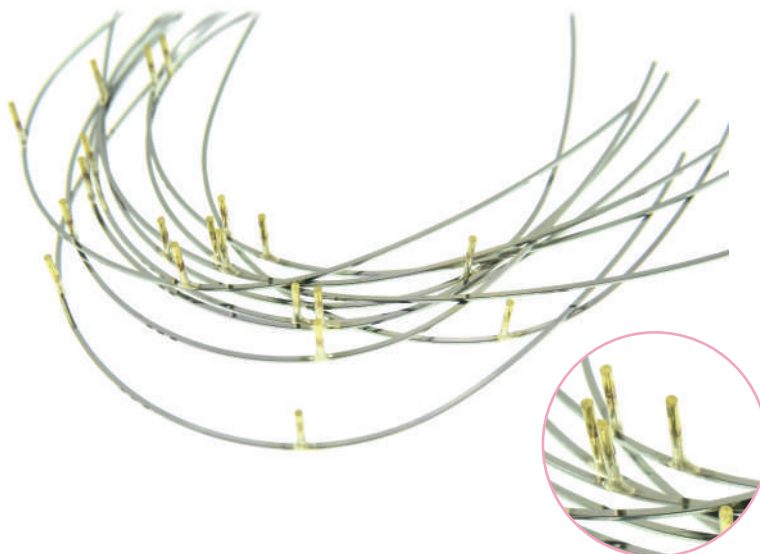
Specialty arch wires that combine different materials and geometries with the aim of torque control in the front portion during the space closure.

The arches have hooks that once positioned between the lateral and the cuspid, are intended for the application of pull tractions and are used as connector between the parts of the arch wire.

The front portion is made of Beta **MEMORIA**® alloy and is available in .019"x.025" or .021" x .027" for the torque control. The rear portion is made of stainless steel, available in .016"x .016" to promote the sliding of the arch wire into the slot

Pack of 2

upper	distance between the hooks		lower	distance between the hooks	
	mm	inch		mm	mm
C7110-34	34	.019x.025 / .016x.016	C7150-24	24	
C7110-36	36		C7150-26	26	
C7111-34	34	.021x.027 / .016x.016	C7151-24	24	
C7111-36	36		C7151-26	26	



ARCHWIRES WITH HOOKS

Medium arch form. Made of spring hard wire .019"x.025"

Pack of 10

upper		lower	
mm		mm	
34	C3112-34	24	C3152-24
36	C3112-36	26	C3152-26
38	C3112-38	28	C3152-28
40	C3112-40	30	C3152-30
42	C3112-42		

The size expressed in mm indicates the distance between the hooks.

**MEMORIA®
COIL SPRINGS**

In superelastic nickel titanium alloy, they have always been used in orthodontic treatments. These springs combine the characteristics of coil spring design with the non-deformable properties of superelastic **MEMORIA®** alloy. Available open for compressions and gain in space, closed with wound ends for use with hooks of tubes and brackets.

The type with a ligature wire allows spaces wider than 15 mm to be linked.



**MEMORIA®
CLOSED COIL SPRINGS
WITH WOUND ENDS**

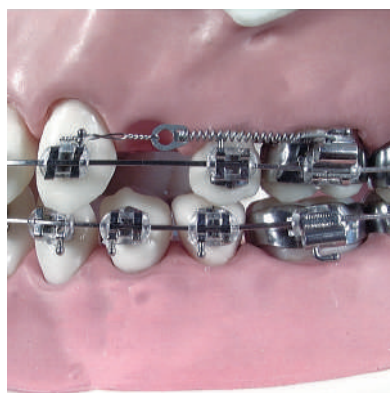
	g		pkg.
light	150	C1230-00	10
medium	200	C1230-01	
heavy	250	C1230-02	



**MEMORIA®
OPEN COIL SPRINGS**

Pack of 2 springs, 18 cm long

	spring	wire	
super	.030	.009	C1009-30
light	.036	.009	C1009-36
light	.030	.010	C1211-30
medium	.030	.012	C1212-30
heavy	.036	.014	C1214-36
for extraoral lip bumper	.045	.010	C1210-45
	.055	.014	C1214-55



**MEMORIA®
CLOSED COIL SPRING
WITH WOUND ENDS
AND LIGATURE WIRE**

	g		pkg.
light	150	C1231-00	10
medium	200	C1231-01	
heavy	250	C1231-02	



**C1230-95
MEMORIA®
COIL SPRING KIT**

For crimping of surgical hooks use plier P1911-00.

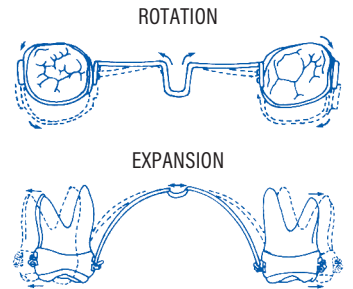
Pack content:

3 open coil springs, 15 closed coil springs with wound ends, 15 closed coil springs with wound ends and ligature wire, 10 stops, 10 **MIM®** surgical hooks.




PALATAL BARS

Palatal bars allow controllable movements of rotation, expansion and contraction of upper first molars. Made of heat-treated wire, 0,9 mm in diameter, to increase their tensile strength, they are easy to remove from the tubes for activation.




PALATAL BAR

		
mm		pkg.
34	C0570-34	5
36	C0570-36	
38	C0570-38	
40	C0570-40	
42	C0570-42	
44	C0570-44	
46	C0570-46	
48	C0570-48	
50	C0570-50	
52	C0570-52	

**C0570-96
PALATAL BAR KIT**

Assorted kit of 50

REVERSE LOOP PALATAL BAR

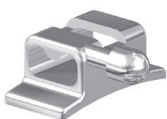
		
mm		pkg.
34	C0576-34	5
36	C0576-36	
38	C0576-38	
40	C0576-40	
42	C0576-42	
44	C0576-44	
46	C0576-46	
48	C0576-48	
50	C0576-50	
52	C0576-52	

**C0576-96
REVERSE LOOP
PALATAL BAR KIT**

Assorted kit of 50

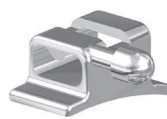
CAUTION:

the palatal bar should be securely ligated into the lingual sheaths with steel or elastic ligatures. Improper use may result in injury by aspiration or ingestion. Recommended for use with **MIM®** lingual tubes:



WITH BALL HOOK

G2846-02 Right
G2846-03 Left



**WITH BALL HOOK
ROTATION -8°**

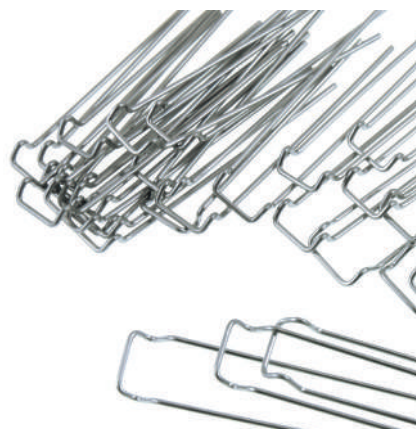
G2847-02 Right
G2847-03 Left



BALL HOOKS

Stainless steel.
Thanks to an innovative plasma technology, the hook head is perfectly spherical.

Ø			pkg.
mm	inch		
0,7	.028	C1610-17	
0,8	.032	C1610-18	100
0,9	.036	C1610-19	



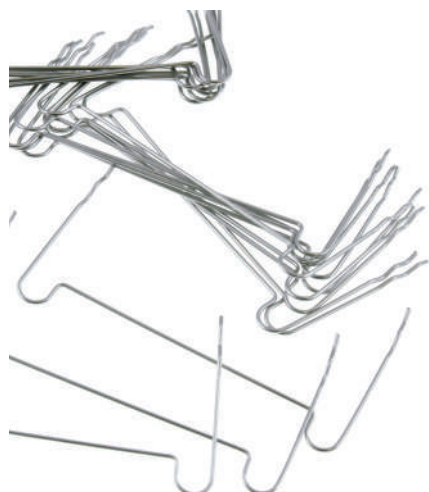
STANDARD ADAMS CLASPS

Spring hard stainless steel.

C0580-95 STANDARD ADAMS CLASP KIT

Assorted kit of 100

Ø			pkg.
mm			
5,0		C0580-05	
5,5		C0580-055	
6,0		C0580-06	
6,5		C0580-065	
7,0	0,7 mm	C0580-07	10
8,0		C0580-08	
9,0		C0580-09	
10,0		C0580-10	
11,0		C0580-11	
12,0		C0580-12	



STANDARD LABIAL ARCHES

Spring hard stainless steel.

C0585-95 STANDARD LABIAL ARCH KIT

Assorted kit of 100

Ø			pkg.
mm			
25		C0585-25	
28		C0585-28	
31		C0585-31	
34		C0585-34	
37	0,8 mm	C0585-37	10
40		C0585-40	
43		C0585-43	
46		C0585-46	
48		C0585-48	
50		C0585-50	