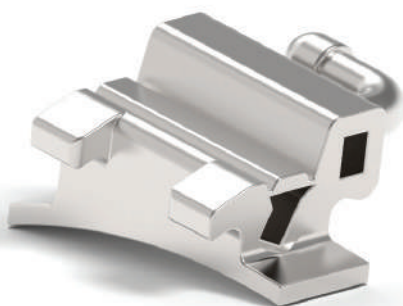
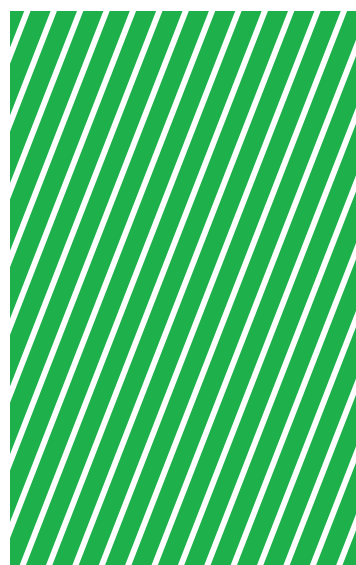


TUBES AND BRACKETS



G



Leone buccal tubes are produced in stainless steel with Metal Injection Moulding technology for absolute precision of the slot size and a special bevelled design for maximum patient's comfort.

Every **MIM**® tube and attachment may be pre welded to either **CALIBRA**® o **WEB** bands with free prewelding service or solder-brazed on the D.B. anatomical mesh pad **MAXI F2800-00**, which is first molar anatomical contoured.

Solder-brazing service is free of charge.

Leone brackets are manufactured from stainless steel with a mechanical micro machine working system to get the highest precision of slots. General tolerance is lower than 3/100. Under edges of tie wings are rounded.

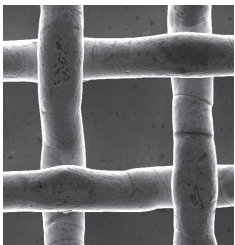
All the Leone brackets may be welded on either **CALIBRA**® ou **WEB** bands with a free prewelding service.



METAL INJECTION MOULDING
TECHNIQUE
ALLOWING THE HIGHEST PRECISION OF SLOT



ROUNDED UNDER EDGES
OF TIE-WINGS
FOR HIGHER PATIENT COMFORT



FREE PREWELDING AND
SOLDER-BRAZING SERVICE



MIM® BUCCAL TUBES

Every MIM® tube may be pre welded to either CALIBRA® o WEB bands with free prewelding service (page 89) or solder-brazed on the D.B. anatomical mesh pad MAXI F2800-00, which is first molar anatomical contoured (page 138). Solder-brazing service is free of charge. Also available in the direct bonding version upon request (pag. 135).

Pack of 10



Pack of 100 on request

				torque	rect. tube rot.	round tube diam.	retc. tube slot	weldable tubes
<p>auxiliary tube .018"x.025"</p>	6/6 6/6		0°			.045" occl.	R .018"	G8084-22
							L	G8084-23
	6/6		0°			.051" occl.	R .018"	G8085-12
							L	G8085-13
<p>auxiliary tube .018"x.025"</p>	6/6		-10°	+8°		.045" occl.	R .018"	G8384-22
							L	G8384-23
	6/6		-10°	+8°		.051" occl.	R .018"	G8385-12
							L	G8385-13
<p>auxiliary tube .018"x.025"</p>	6/6 6/6		0°			.045" ging.	R .018"	G8084-12
							L	G8084-13
	6/6		-10°	+8°		.045" ging.	R .018"	G8384-12
							L	G8384-13
<p>auxiliary tube .018"x.025"</p>	6/6 6/6		0°				R .018"	G8070-16
							L	G8070-17
	6/6		-14°	+8°			R .018"	G8070-02
							L	G8070-03
6/6		-25°	+8°			R .018"	G8070-06	
						L	G8070-07	
<p>auxiliary tube .018"x.025"</p>	6/6						R .022"	G8010-16
							L	G8010-17
<p>auxiliary tube .018"x.025"</p>	6/6						R .022"	G8010-02
							L	G8010-03
<p>auxiliary tube .018"x.025"</p>	6/6						R .022"	G8010-06
							L	G8010-07

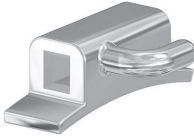















MIM® BUCCAL TUBES

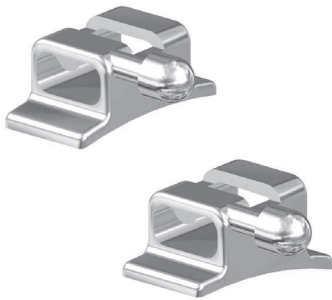
Pack of 10



Pack of 100 on request

				torque	rect. tube rot.	round tube diam.	retc. tube slot	weldable tubes	
	6/6 6/6		0°			.045" occl.	.018" R G8084-32	L G8084-33	
							.022" R G8024-32	L G8024-33	
	6/6 6/6		0°			.051" occl.	.018" R G8085-22	L G8085-23	
							.022" R G8025-22	L G8025-23	
	6/6 6/6		-10°	+8°		.045" occl.	.018" R G8384-32	L G8384-33	
							.022" R G8324-32	L G8324-33	
	6/6 6/6		-10°	+8°		.051" occl.	.018" R G8385-22	L G8385-23	
							.022" R G8325-22	L G8325-23	
		6/6 6/6		0°			.045" ging.	.018" R G8084-02	L G8084-03
								.022" R G8024-02	L G8024-03
		6/6 6/6		0°			.051" ging.	.018" R G8085-02	L G8085-03
								.022" R G8025-02	L G8025-03
6/6 6/6			-10°	+8°		.045" ging.	.018" R G8384-02	L G8384-03	
							.022" R G8324-02	L G8324-03	
6/6 6/6			-10°	+8°		.051" ging.	.018" R G8385-02	L G8385-03	
							.022" R G8325-02	L G8325-03	
6/6 6/6			-25°	+8°		.045" ging.	.018" R G8384-06	L G8384-07	
							.022" R G8324-06	L G8324-07	
6/6 6/6			-25°	+8°		.051" ging.	.018" R G8385-06	L G8385-07	
							.022" R G8325-06	L G8325-07	

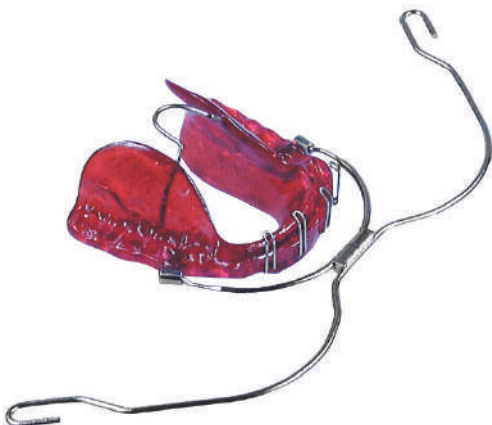
				torque	rect. tube rot.	round tube diam.	ret. tube slot	weldable tubes	
	7 6 6 7 7 6 6 7	  	0°				.018"	R G8081-02 L G8081-03	
							.022"	R G8021-02 L G8021-03	
	7 6 6 7	  	-10° +8°					.018"	R G8381-02 L G8381-03
								.022"	R G8321-02 L G8321-03
								.022"	R G8321-12 L G8321-13
									R G8321-16 L G8321-17
	7 6 6 7	  	-14° +8°						R G8321-16 L G8321-17
									.022"
		  	-20° +8°						
									.022"
		  	-25° +8°						
									.022"



MIM® LINGUAL TUBE WITH BALL HOOK

- G2846-02** Right
- G2846-03** Left
- G2847-02** Right, rotation -8°
- G2847-03** Left, rotation -8°

The curved flanges adapt to contours of both first and second molars. For use with double wires: .036".
Pack of 10



MIM® ACTIVATOR TUBE FOR EXTRAORAL FACEBOW

Manufactured with Metal Injection Moulding technology, it allows high retention into acrylics. Comfortable bevelled design.
Pack of 10

- A0761-45** Ø .045"
- A0761-51** Ø .051"

CONVERTIBLE MIM® BUCCAL TUBES











The laser welded convertible cap prevents from any detachment and it is easy removable with the special Leone instrument P1090-00. Every tube is available: in the D.B. version, prewelded to either **CALIBRA®** o **WEB** bands or solder-brazed on the D.B. anatomical mesh pad **MAXI F2800-00** (free services see pages 89, 138).

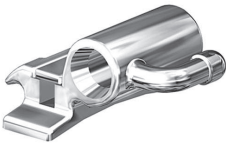
Pack of 10



Pack of 100 on request

					torque	rect. tube rot.	round tube diam.	rect. tube slot	weldable tubes
	6/6 6/6	 	0°			.045" occl.	.018"	R G8184-22 L G8184-23	
							.022"	R G8124-22 L G8124-23	
	6/6	 	0°			.051" occl.	.018"	R G8185-12 L G8185-13	
							.022"	R G8125-12 L G8125-13	
	6/6	 	-10°	+8°		.045" occl.	.018"	R G8484-22 L G8484-23	
							.022"	R G8424-22 L G8424-23	
	6/6	 	-10°	+8°		.051" occl.	.018"	R G8485-12 L G8485-13	
							.022"	R G8425-12 L G8425-13	
auxiliary tube .018"x.025"									
	6/6 6/6	 	0°				.018"	R G8170-16 L G8170-17	
							.022"	R G8110-16 L G8110-17	
	6/6	 	-14°	+8°			.018"	R G8470-02 L G8470-03	
							.022"	R G8410-02 L G8410-03	
6/6	 	-25°	+8°			.018"	R G8470-06 L G8470-07		
						.022"	R G8410-06 L G8410-07		
auxiliary tube .018"x.025"									
	6/6 6/6	 	0°			.045" occl.	.018"	R G8184-12 L G8184-13	
							.022"	R G8124-12 L G8124-13	
	6/6	 	0°			.051" occl.	.018"	R G8185-22 L G8185-23	
							.022"	R G8125-22 L G8125-23	
	6/6	 	-10°	+8°		.045" occl.	.018"	R G8484-12 L G8484-13	
							.022"	R G8424-12 L G8424-13	
	6/6	 	-10°	+8°		.051" occl.	.018"	R G8485-22 L G8485-23	
							.022"	R G8425-22 L G8425-23	
6/6	 	-14°	+10°		.045" occl.	.022"	R G8424-32 L G8424-33		

			torque	rect. tube rot.	round tube diam.	rect. tube slot	weldable tubes		
6/6		0°			.045" ging.	.018"	R L	G8184-02 G8184-03	
						.022"	R L	G8124-02 G8124-03	
		0°				.051" ging.	.018"	R L	G8185-02 G8185-03
							.022"	R L	G8125-02 G8125-03
	6/6		-10°	+8°		.045" ging.	.018"	R L	G8484-02 G8484-03
							.022"	R L	G8424-02 G8424-03
6/6		-10°	+8°		.051" ging.	.018"	R L	G8485-02 G8485-03	
						.022"	R L	G8425-02 G8425-03	
6/6		-25°	+8°		.045" ging.	.022"	R L	G8424-16 G8424-17	
						.018"	R L	G8484-06 G8484-07	
						.022"	R L	G8424-06 G8424-07	
6/6		-25°	+8°		.051" ging.	.018"	R L	G8485-06 G8485-07	
						.022"	R L	G8425-06 G8425-07	
6/6		0°				.018"	R L	G8181-02 G8181-03	
						.022"	R L	G8121-02 G8121-03	
6/6		-10°	+8°			.018"	R L	G8481-02 G8481-03	
						.022"	R L	G8421-02 G8421-03	
6/6		-20°	+8°			.022"	R L	G8421-16 G8421-17	
6/6		-25°	+8°			.018"	R L	G8481-06 G8481-07	
						.022"	R L	G8421-06 G8421-07	



P1090-00
CAP REMOVER
FOR CONVERTIBLE TUBES

It makes the conversion of rectangular tube easy when banding of second molar is required. Autoclavable. Replaceable tips **P1090-01**, 2 pcs.



WELDABLE BRACKETS

Pack of 10



Pack of 100 on request



UPPER

		torque	ang.	mm	slot .018"	slot .022"		
2 1 2								
			0°	2,5	R	G2080-14	G2020-14	
			0°	3,3	R	G2080-34	G2020-34	
1 1								
			0°	3,5	R	G2086-14	G2026-14	
			0°	4,4	R	G2080-44	G2020-44	
			+10°	+5°	3,3	R		G2421-02 G2421-03
			+22°	0°	3,3	R	G2480-04	
2 2								
			0°	2,7	R	G2080-24	G2020-24	
			+5°	+10°	2,7	R		G2422-02 G2422-03
			+14°	+8°	2,7	R	G2482-02 G2482-03	
3 3								
			0°	2,5	R	G2080-14	G2020-14	
			0°	2,7	R	G2088-04	G2028-04	
			0°	3,3	R	G2088-14	G2028-14	
			+7°	+5°	3,3	R	G2483-08 G2483-00	
			-10°	+10°	3,3	R		G2423-02 G2423-03
			-10°	+15°	3,3	R		G2423-12 G2423-13
5 4 4 5								
			0°	2,7	R	G2088-04	G2028-04	
			0°	3,3	R	G2088-34	G2028-34	
			-7°	0°	3,3	R	G2484-05	
			-15°	0°	3,3	R	G2485-05	
			0°	2,0	R	G2089-14	G2029-14	
			0°	3,3	R	G2084-01	G2024-01	
			-17°	0°	3,3	R	G2489-15	G2429-15
			-22°	0°	3,3	R	G2489-05	G2429-25
6 6								
			0°	3,5	R	G2086-14	G2026-14	
			0°	4,4	R	G2080-44	G2020-44	



LOWER

		torque	ang.	mm	slot .018"	slot .022"		
2 1 2								
			0°	2,0	R	G2080-04	G2020-04	
			0°	2,1	R	G2080-05	G2020-05	
3 3								
			0°	2,5	R	G2080-14	G2020-14	
			0°	2,7	R	G2088-04	G2028-04	
			0°	3,3	R	G2088-14	G2028-14	
			+7°	+5°	3,3	R	G2483-00 G2483-08	
			-10°	+5°	3,3	R		G2423-06 G2423-07
			-10°	+10°	3,3	R		G2423-16 G2423-17
5 4 4 5								
			0°	2,7	R	G2088-04	G2028-04	
			0°	3,3	R	G2088-34	G2028-34	
			-7°	0°	3,3	R	G2484-05	
			-15°	0°	3,3	R	G2485-05	
			0°	2,0	R	G2089-14	G2029-14	
			0°	3,3	R	G2084-01	G2024-01	
			-17°	0°	3,3	R	G2489-15	G2429-15
			-22°	0°	3,3	R	G2489-05	G2429-25
6 6								
			0°	3,5	R	G2086-14	G2026-14	
			0°	4,4	R	G2080-44	G2020-44	

■ suggested for Andrews system
■ suggested for Ricketts system

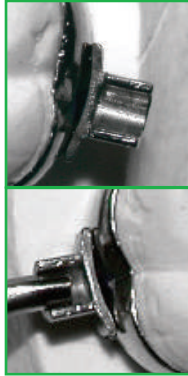
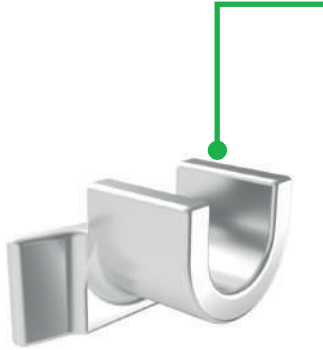


CONNECTORS FOR LASER WELDING

Connectors for laser welding are accessories to be welded on the lingual side of the bands. Manufactured with **MIM®** technology, they feature a special fit geometry allowing the hold of the wire or the arm of the expander for laser welding of elements with a different thickness. The three models allow to make expanders, palatal bars and quad-helix with safety and solidity of the welded joints.

Pack of 10

G0560-00
CONNECTOR
FOR EXPANDERS



CONNECTOR'S FLANGES ENSURE A GOOD JOINT TO THE BAND BY MEANS OF A WELDING MACHINE

CONNECTOR'S SHAPE ENABLES A CORRECT BIOMECHANICAL POSITION OF THE ARM AND THE HYGIENE OF THE AREA

G0565-09
CONNECTOR 0,9 MM
FOR BICUSPIDS



LASER WELDED CONNECTOR MECHANIC RESISTANCE AND STAINLESSNESS ARE GUARANTEED

G0570-09
CONNECTOR 0,9 MM
FOR MOLARS



DETAIL OF THE WIRE HOUSING INTO THE CONNECTOR'S SEAT

ROUND TUBES



mm	pkg.
.036" 6,5	G0533-36
.045" 5,5	G0532-45 10
.045" 9,5	G0535-45

ROUND TUBING



mm	pkg.
.036"	G0525-36 1 pc 30 cm long
.045"	G0525-45

TWIN ARCH SYSTEM TUBES

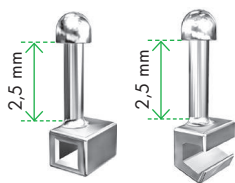
Pack of 10



G0520-24
Length 28,6 mm
For double wire .011".
Outer diameter: .036".



G0533-36
For soldering.
Inner diameter .036".

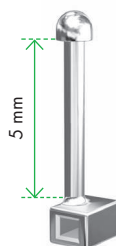


MIM® SURGICAL HOOKS

For intermaxillary post-surgical fixation and tractions. Round edges. Easy to place with plier P1911-00.

mm	for arch .018"	for arch .022"	pkg.
2,0	G9620-18	G9620-22	10
2,0 open	G9650-18	G9650-22	

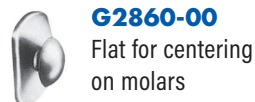
G9019-25 CRIMPABLE CLOSED HOOK



For treatment with STEP technique, it is used for the application of intra and extraoral forces on .019"x.025" archwires in extra spring hard or super hard heat-treated stainless steel. Crimp it with a large cutter or P1911-00 plier. **Pack of 10**

LINGUAL BUTTONS

Pack of 10



G2860-00
Flat for centering on molars



G2865-00
Curved for mesial placement on molars



G2870-00
Deep curved for bicuspid



CRIMPABLE ARCH STOP

It can be inserted without removing the archwire. Once placed into the mouth, crimp it with a heavy cutter or universal pliers. Suggested for use with coil springs too. **Pack of 10**

G9225-18
for arches .018"x.025"

G9228-22
for arches .022"x.028"



ELASTIC LUGS

Pack of 100

G2893-00
Curved for posteriors

G2890-00
Flat for anteriors



LINGUAL CLEATS LOW PROFILE

Pack of 100

G2824-00
For molars

G2822-00
For cuspids and bicuspid



G2810-00 EYELET

Pack of 100



G2820-00 LINGUAL CLEATS HIGH PROFILE

Pack of 100



G2850-00 LINGUAL SEATING LUGS

Pack of 100