

saeyang

# CRAFIEN

PROFESSIONAL NAIL DRILL



products catalogue

20 / 21

since 1976

# Welcome to SAEYANG

Thank you for your interest and support for our products.

We, Saeyang Microtech, has continued to grow since its foundation in 1976 specialized in manufacturing micro-handpieces for laboratory and dental field with enjoying a good reputation from overseas more than 100 countries as well as Korea.

The most important thing is superior quality of our products and through this, we always do our best for customer satisfaction as our top priority. Also we focus on developing new products by advanced technical innovation in R&D center and launching at least more than two models in the market with ongoing investments for new facilities each year.

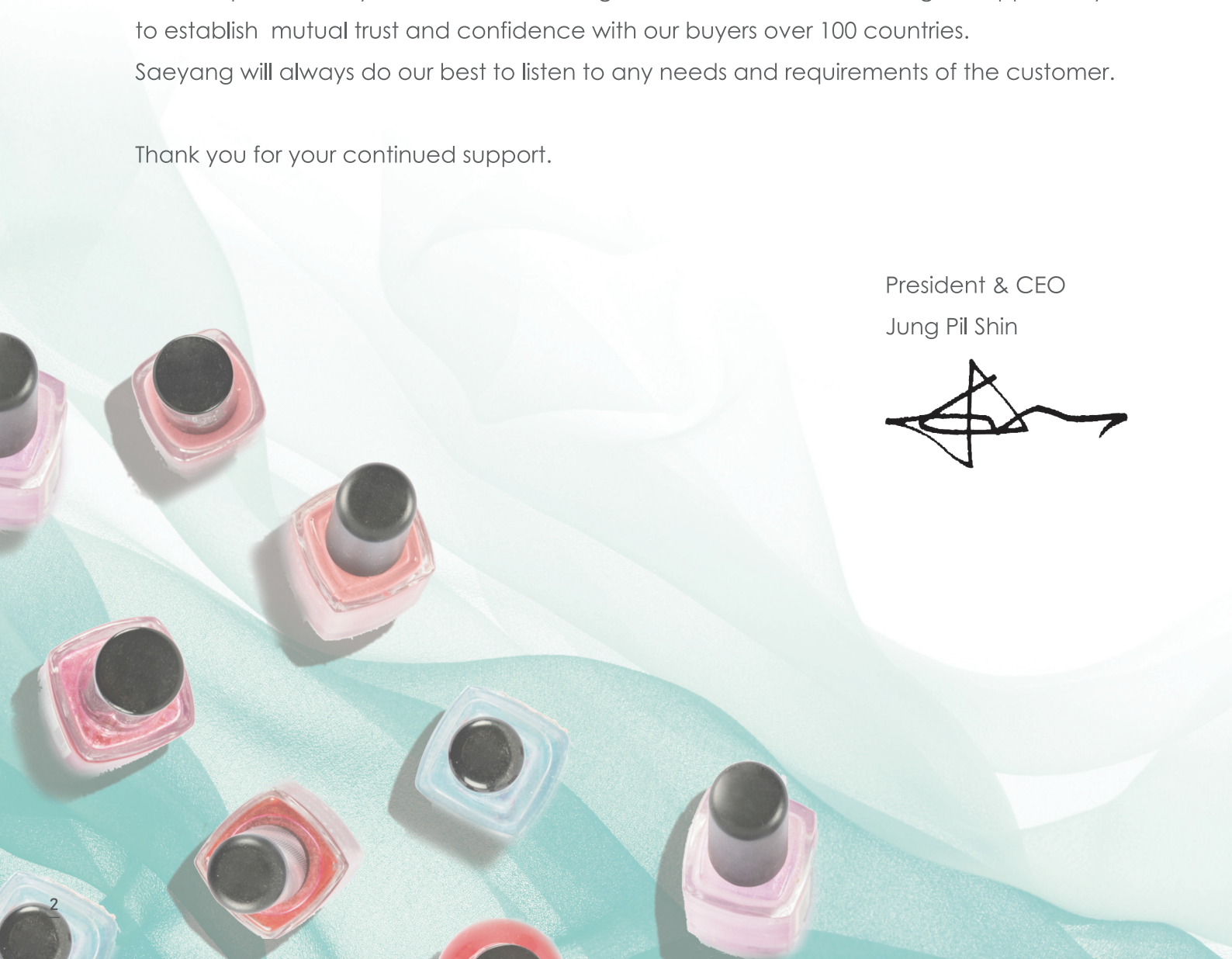
We exhibit at overseas famous exhibitions more than 18 times in the United States, Germany, France, Spain, UK, Italy, H.K and China. During those exhibitions, we have a good opportunity to establish mutual trust and confidence with our buyers over 100 countries.

Saeyang will always do our best to listen to any needs and requirements of the customer.

Thank you for your continued support.

President & CEO

Jung Pil Shin





# SAEYANG History

- 1976 Company Established
- 1977 Registered manufacturing of medical equipment.
- 1987 Registered trading business
- 1989 Registered Korea medical equipment cooperative association
- 1991 Registered of designs for engine for dental laboratory
- 1998 Certified ISO 9001 from TUV (Germany)
- 1999 Certified CE Mark from TUV (Germany)
- 2000 Certified Venture enterprise for high technology
- 2001 Awarded official Superior Exporting Firm
- 2001 Awarded Leading Enterprise
- 2002 Certified CE Mark of New item "Escort"
- 2003 Registered manufacturing Brushless motor
- 2003 Certified CE Mark of "Marathon Multi 600" Brushless motor
- 2004 Established R&D center
- 2004 Certified CE Mark of New item "Marathon N7&N2"
- 2005 Certified CE Mark of New item "Marathon HANDY700 Series" Brush/Brushless motor
- 2005 Awarded official best Exporting Firm
- 2006 Moved into a new factory
- 2006 Certified PSE from TUV
- 2006 Opening Ceremony of a new factory as well as the 30th anniversary
- 2008 Certified ISO 9001 : 2000 from SGS (U.K)  
Certified ISO 13485 : 2003 from SGS (U.K)  
Certified Directive 93/42/EEC from SGS (U.K)
- 2010 Certified CE Mark of New item "Endo e class"
- 2011 Development of Endo a class
- 2012 Dental contra angle
- 2013 Developed Implant Motor
- 2013 Certified FDA (Endo Motor)
- 2014 60,000RPM Handpiece Developed
- 2014 20:1 Optic Handpiede Developed
- 2015 Certified FDA CFDA(Implant Motor)
- 2015 Awarded Grand Prize for 2015 Best Company in Daegu City
- 2016 Awarded for Exporting US\$ 20 million  
Awarded for Daegu Star Company
- 2017 Factory expansion  
Development of Endo E plus  
Development of Ki-20 Advance  
Development of K35 cube
- 2018 Development of Endo A Class (APX)  
Development of MINI cro  
Korean World-class Product Award 2018







# Portable type

K38	—	p6
MINI cro	—	p7
Combi	—	p8

# K38

## FEATURE

- Standard type / Clip type
- MAX 8hours (MH20)
- LI-ION battery (rechargeable)
- Digital speed display window
- LED display for battery charging level
- Automatic System
  - power save
  - forward / reverse direction button
  - overload protection (warning signal)
- On / Off foot Switch (SFP-27)



## SPECIFICATION



### controller

Model	Power supply	Battery	Electric power	Speed	Weight	Dimensions
K38	DC 12V	Li-ion,2850mAh	24W	MAX. 30,000 rpm	277 g	W67 x D128 x H30(mm)

### handpiece

Model	Motor type	Input	Speed	Max. Torque	Weight	Dimensions
SDE-MH20	Coreless	12V	0 - 30,000 rpm	1.3 Ncm	130 g	L120 x Ø20 (mm)
SDE-H200	DC	12V	0 - 30,000 rpm	2.9 Ncm	145 g	L129 x Ø22 (mm)
SDE-SH300	DC	12V	0 - 30,000 rpm	2.9 Ncm	145 g	L129 x Ø22 (mm)



## CONTENTS

Controller standard type clip type	Handpiece	Charger	Handpiece holder	On / Off foot switch	Handpiece stand	Cradle (optional)
--	-----------	---------	---------------------	-------------------------	--------------------	----------------------



# MINI cro

## FEATURE

- Clip type
- LI-ION battery (rechargeable)
- Speed display LED
  - white >> sky blue >> blue >> pink
- Overload protection
- Forward / Reverse direction switch
- Battery remaining indicator



## SPECIFICATION



### controller

Model	Power supply	Battery	Electric power	Speed	Weight	Dimensions
MINI cro	DC 12V	Li-ion, 2850mAh	24W	MAX. 30,000 rpm	225 g	W65 x D147 x H25(mm)

### handpiece



Model	Motor type	Input	Speed	Max. Torque	Weight	Dimensions
SDE-SH300S	DC	12V	0 - 30,000 rpm	1.6 Ncm	130 g	L135 x Ø23 (mm)
SDE-SH300	DC	12V	0 - 30,000 rpm	2.9 Ncm	145 g	L129 x Ø22 (mm)
SDE-M300Es	DC E-TYPE	12V	0 - 30,000 rpm	2.4 Ncm	90 g	L97 x Ø23 (mm)

## CONTENTS

Controller	Handpiece	Charger	Handpiece holder	On / Off foot switch	Handpiece stand	Cradle (optional)
------------	-----------	---------	------------------	----------------------	-----------------	-------------------

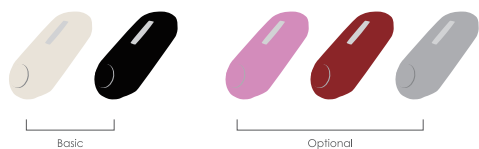
# Combi

## FEATURE

- MAX 4hours
- Rechargeable battery
- Power-on & speed control knob at one dial
- Forward / Reverse direction switch
- On / Off foot switch (SFP-27)
- Portable carry-on bag
- Shoulder bag



## SPECIFICATION



### controller

Model	Power supply	Battery	Electric power	Speed	Weight	Dimensions
COMBI	DC 12V	Ni-MH, 800mAh	24W	MAX. 20,000 rpm	268 g	W73 x D170 x H24(mm)

### handpiece




Model	Motor type	Input	Speed	Max. Torque	Weight	Dimensions
SDE-MH20 (20k)	Coreless	12V	0 - 20,000 rpm	1.3 Ncm	130 g	L120 x Ø20 (mm)
SDE-SH300	DC	12V	0 - 30,000 rpm	2.9 Ncm	145 g	L129 x Ø22 (mm)
SDE-MH20E	DC E-TYPE	12V	0 - 20,000 rpm	2.2 Ncm	80 g	L96 x Ø20 (mm)

## CONTENTS

Controller	Handpiece	Charger	On / Off foot switch	Handpiece stand	Cradle (optional)
------------	-----------	---------	----------------------	-----------------	-------------------



# memo









## Desk type

K-35	—	p12
K-35 cube	—	p13
Escort II pro	—	p14
Escort III	—	p15
M3-Champion	—	p16
M3-Mighty	—	p17
NEW N2	—	p18
NEW N7	—	p19
Combi 24	—	p20

# K-35

## FEATURE

Digital speed display window

Auto - cruise control

- in case of connection variable speed control

Automatic system

- power save

- forward / reverse button

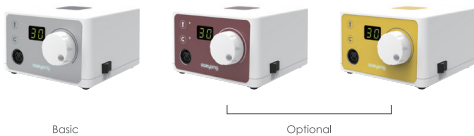
- overload protection, warning LED

Variable speed control pedal (FS-60)

On / Off foot switch (SFP-27)



## SPECIFICATION



### controller

Model	Power supply	Electric power	Speed	Weight	Dimensions
K35	AC100-120V or 220-240V, 50/60Hz	24W	MAX. 30,000 rpm	268 g	W73 x D170 x H24(mm)

### handpiece



Model	Motor type	Input	Speed	Max. Torque	Weight	Dimensions
SDE-H20	DC	30V	0 - 30,000 rpm	2.9 Ncm	155 g	L151 x Ø26 (mm)
SDE-H200	DC	30V	0 - 30,000 rpm	2.9 Ncm	145 g	L129 x Ø22 (mm)
SDE-SH300	DC	30V	0 - 30,000 rpm	2.9 Ncm	145 g	L29 x Ø22 (mm)

## CONTENTS

Controller	Handpiece	Handpiece stand	On / Off foot switch	Variable speed control pedal
------------	-----------	-----------------	----------------------	------------------------------



# K-35 cube

## FEATURE

Non - stage speed control

- volume dialing system

Built-in handpiece cradle and bit stand

Forward / Reverse direction switch

On / Off foot switch (SFP-27)



## SPECIFICATION



Basic

Optional

New color

### controller

Model	Power supply	Electric power	Speed	Weight	Dimensions
K35 cube	AC100-120V or 220-240V, 50/60Hz	45W	MAX. 30,000 rpm	1.3 kg	W120 x D120 x H85(mm)

### handpiece



Model	Motor type	Input	Speed	Max. Torque	Weight	Dimensions
SDE-SH20N	DC	30V	0 - 30,000 rpm	2.7 Ncm	160 g	L146 x Ø26 (mm)
SDE-H200	DC	30V	0 - 30,000 rpm	2.9 Ncm	145 g	L129 x Ø22 (mm)
SDE-SH30N	DC	30V	0 - 30,000 rpm	2.9 Ncm	145 g	L129 x Ø22 (mm)

## CONTENTS

Controller	Handpiece	Handpiece stand	Handpiece holder	On / Off foot switch
------------	-----------	-----------------	------------------	----------------------

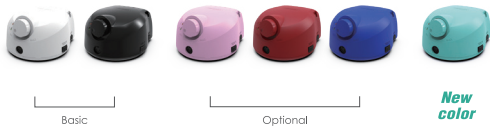
# Escort II pro

## FEATURE

- Powerful performance with low noise & vibration
- Built-in handpiece cradle and bit stand
- Automatic safety overload protection system
- Forward / Reverse direction switch
- Variable speed control pedal (FS-60N)
- On / Off foot switch (SFP-27)



## SPECIFICATION



### controller

Model	Power supply	Electric power	Speed	Weight	Dimensions
Escort II pro	AC100-120V or 220-240V, 50/60Hz	45W	MAX. 30,000 rpm	1.25 kg	W134 x D154 x H82.4(mm)

### handpiece

Model	Motor type	Input	Speed	Max. Torque	Weight	Dimensions
SDE-SH20N	DC	30V	0 - 30,000 rpm	2.7 Ncm	160 g	L146 x Ø26 (mm)
SDE-H200	DC	30V	0 - 30,000 rpm	2.9 Ncm	145 g	L129 x Ø22 (mm)
SDE-SH30N	DC	30V	0 - 30,000 rpm	2.9 Ncm	145 g	L129 x Ø22 (mm)

## CONTENTS

Controller	Handpiece	Handpiece stand	Handpiece holder	On / Off foot switch
------------	-----------	-----------------	------------------	----------------------

# Escort III

**NEW  
VERSION**

## FEATURE

- Powerful performance with low noise & vibration
- Built-in handpiece cradle and bit stand
- Non - stage speed control volume dialing system
- Forward / Reverse direction switch
- On / Off foot switch (SFP-27)



## SPECIFICATION



### controller

Model	Power supply	Electric power	Speed	Weight	Dimensions
ESCORT III	AC100-120V or 220-240V, 50/60Hz	40W	MAX. 30,000 rpm	1.18 kg	W115 x D147 x H71 (mm)

### handpiece



Model	Motor type	Input	Speed	Max. Torque	Weight	Dimensions
SDE-SH20N	DC	30V	0 - 30,000 rpm	2.7 Ncm	160 g	L146 x Ø26 (mm)
SDE-H200	DC	30V	0 - 30,000 rpm	2.9 Ncm	145 g	L129 x Ø22 (mm)
SDE-SH30N	DC	30V	0 - 30,000 rpm	2.9 Ncm	145 g	L129 x Ø22 (mm)

## CONTENTS

Controller	Handpiece	Handpiece stand	Handpiece holder	On / Off foot switch
------------	-----------	-----------------	------------------	----------------------



# M3-Champion

## FEATURE

- Compact size
- Built-in handpiece cradle and bit stand
- Forward / Reverse direction switch
- On / Off foot switch (SFP-27)



## SPECIFICATION



### controller

Model	Power supply	Electric power	Speed	Weight	Dimensions
M3-CHAMPION	AC100-120V or 220-240V, 50/60Hz	45W	MAX. 30,000 rpm	1.23 kg	W118 x D158 x H78(mm)

### handpiece



Model	Motor type	Input	Speed	Max. Torque	Weight	Dimensions
SDE-SH20N	DC	30V	0 - 30,000 rpm	2.7 Ncm	160 g	L146 x Ø26 (mm)
SDE-H200	DC	30V	0 - 30,000 rpm	2.9 Ncm	145 g	L129 x Ø22 (mm)
SDE-SH30N	DC	30V	0 - 30,000 rpm	2.9 Ncm	145 g	L129 x Ø22 (mm)

## CONTENTS

Controller	Handpiece	Handpiece stand	Handpiece holder	On / Off foot switch
------------	-----------	-----------------	------------------	----------------------

# M3-Mighty

## FEATURE

- Compact size
- Built-in handpiece cradle and bit stand
- Forward / Reverse direction switch
- On / Off foot switch (SFP-27)



## SPECIFICATION



### controller

Model	Power supply	Electric power	Speed	Weight	Dimensions
M3 - MIGHTY	AC100-120V or 220-240V, 50/60Hz	45W	MAX. 30,000 rpm	1.2 kg	W115 x D147 x H96(mm)

### handpiece



Model	Motor type	Input	Speed	Max. Torque	Weight	Dimensions
SDE-SH20N	DC	30V	0 - 30,000 rpm	2.7 Ncm	160 g	L146 x Ø26 (mm)
SDE-H200	DC	30V	0 - 30,000 rpm	2.9 Ncm	145 g	L129 x Ø22 (mm)
SDE-SH30N	DC	30V	0 - 30,000 rpm	2.9 Ncm	145 g	L129 x Ø22 (mm)

## CONTENTS

Controller	Handpiece	Handpiece stand	Handpiece holder	On / Off foot switch
------------	-----------	-----------------	------------------	----------------------

# NEW N2

## FEATURE

- Automatic safety overload protection system
- Dust - proof cover for switch
- Built - in handpiece cradle & bit stand
- Forward / Reverse direction switch
- On / Off foot switch (SFP-27)
- Variable speed control pedal (FS-60)



## SPECIFICATION



### controller

Model	Power supply	Electric power	Speed	Weight	Dimensions
NEW N2	AC100-120V or 220-240V, 50/60Hz	40W	MAX. 35,000 rpm	1.2 kg	W115 x D147 x H96(mm)

### handpiece



Model	Motor type	Input	Speed	Max. Torque	Weight	Dimensions
SDE-H35SP1	DC	30V	0 - 35,000 rpm	3.2 Ncm	210 g	L152 x Ø27 (mm)
SDE-H200	DC	30V	0 - 30,000 rpm	2.9 Ncm	145 g	L129 x Ø22 (mm)
SDE-SH30N	DC	30V	0 - 30,000 rpm	2.9 Ncm	145 g	L129 x Ø22 (mm)

## CONTENTS

Controller	Handpiece	Handpiece stand	On / Off foot switch	Handpiece holder	Variable speed control pedal
------------	-----------	-----------------	----------------------	------------------	------------------------------



# NEW N7

## FEATURE

- Automatic safety overload protection system
- Dust - proof cover for switch
- Built - in handpiece cradle & bit stand
- Forward / Reverse direction switch
- On / Off foot switch (SFP-27)
- Variable speed control pedal (FS-60)



## SPECIFICATION



### controller

Model	Power supply	Electric power	Speed	Weight	Dimensions
NEW N7	AC100-120V or 220-240V, 50/60Hz	50W	MAX. 40,000 rpm	1.7 kg	W115 x D147 x H96(mm)

### handpiece



Model	Motor type	Input	Speed	Max. Torque	Weight	Dimensions
SDE-SH37N (M45)	DC	30V	0 - 40,000 rpm	4.5 Ncm	205 g	L154 x Ø26 (mm)
SDE-H200	DC	30V	0 - 30,000 rpm	2.9 Ncm	145 g	L129 x Ø22 (mm)
SDE-SH30N	DC	30V	0 - 30,000 rpm	2.9 Ncm	145 g	L129 x Ø22 (mm)

## CONTENTS

Controller	Handpiece	Handpiece stand	On / Off foot switch	Handpiece holder	Variable speed control pedal
------------	-----------	-----------------	----------------------	------------------	------------------------------

# Combi24

## FEATURE

- Built - in handpiece cradle
- Forward / Reverse direction switch
- On / Off foot switch (SFP-27)



## SPECIFICATION



### controller

Model	Power supply	Electric power	Speed	Weight	Dimensions
COMBI24	AC100-120V or 220-240V, 50/60Hz	24W	MAX. 25,000 rpm	882g	W117 x D154 x H72(mm)

### handpiece



Model	Motor type	Input	Speed	Max. Torque	Weight	Dimensions
SDE-SH250	DC	24V	0 - 25,000 rpm	2.9 Ncm	145 g	L129 x Ø22 (mm)
SDE-MH24	Coreless	24V	0 - 25,000 rpm	2.3 Ncm	130 g	L120 x Ø20 (mm)
SDE-MH24E	DC	24V	0 - 20,000 rpm	2.2 Ncm	80 g	L96 x Ø20 (mm)

## CONTENTS

Controller	Handpiece	Handpiece stand	On / Off foot switch
------------	-----------	-----------------	----------------------

# memo



# SPARE PARTS

## Collet sleeve



Collet chuck

Spindle chuck

Spindle assy

Armature

Carbon brush

Ball Bearing



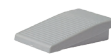
Chuck Joint Wrench

Chuck Wrench

Charger cord

SFP-27 / SFP-22

FS60/FS60N



For K38 / MINI cro

For Combi

On / off foot switch

Variable speed foot pedal

## Handpiece holder

## Handpiece stand

## Motor cord



DC Control box

K35

K38 / MINI cro

Cradle

Portable bag

Shoulder bag

Dust cap

Nail pusher

Nail bit case





## USER GUIDE (For safety & efficiency)

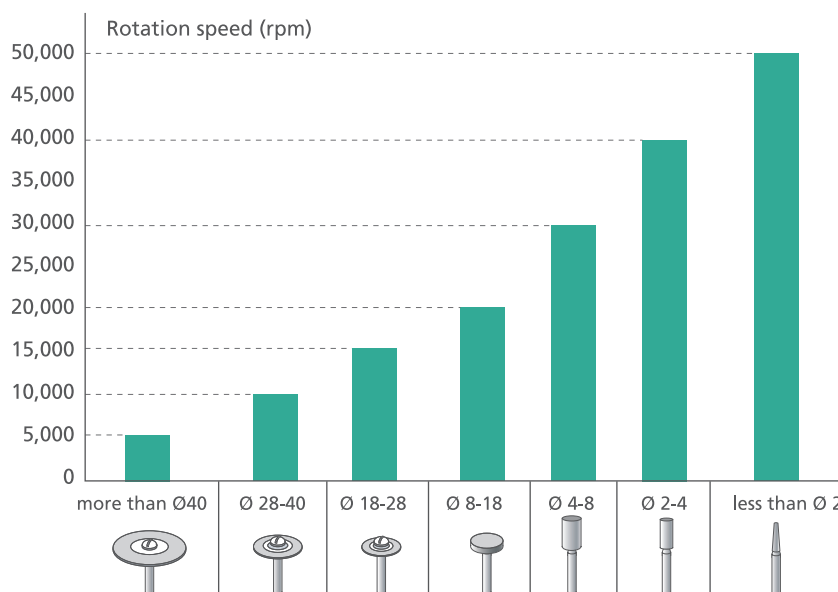
### Precaution

- ▶ Install the unit at the working place and do not use it in a dirty or very hot and humid place. (-20°C ~ 40°C, 0 ~ 90% RH)
- ▶ Please be careful not to drop the handpiece. It will damage ball bearing or weaken durability of motor.
- ▶ Please do not allow water or other liquids to spill onto and into the handpiece and control box.
- ▶ After replacing a bur, please make sure to close the chuck handle.  
Also, do not to open the chuck handle, while the handpiece is operating.
- ▶ While the handpiece is not in operation, it is recommended to keep the bur into the collet chuck after cleaning up.
- ▶ Please plug the power cord after checking the unit power is off. This unit is made for dental laboratory work, nail care and other drilling work.
- ▶ It's only used for by specialists who is trained of electric micro-motor.

### Allowable rotation speed

- ▶ This chart is a general guide for a maximum speed with conventional burs.

The allowable rotation speed can be slightly different, depending on bur materials or types.



#### ※ Notice

1. Make sure not to extend the maximum speed specified by a manufacturer or distributor.
2. Large burs, even being operated below maximum speed, will vibrate.  
Speed should be reduced immediately to prevent damage to a bur, a handpiece or operator.
3. Be sure to insert the bur shank all the way, until it touches the back of the collet chuck, then tighten a collect chuck.  
If the bur is used not inserted completely, it is very dangerous.

# saeyang

[www.saeyang.com](http://www.saeyang.com)

**SAEYANG MICROTECH CO., LTD.**

(Galsan-dong) 348, seongseo-ro, Dalseo-gu, Daegu, 42697, Korea

TEL +82-53-582-9001

E-mail [crafien@saeyang.com](mailto:crafien@saeyang.com)



mobile app



세계일류상품

JAN, 2020

VER. CR-2020-CA01